

Alternator

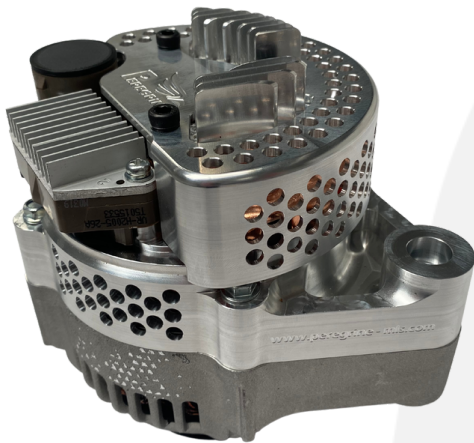
A-Body - High Output

Also available in Medium & Low Output



Peregrine Alternator

The Peregrine Alternator is designed and hand-made for optimised performance in demanding motorsport applications. Each component has been optimised to achieve the highest level of performance over a harsh set of operation conditions.



Alternator Feature Highlights

- Lightweight <3.4kgs
- High output hand wound stator
- Pinned stator for harsh environments
- Upgraded springs for vibration resistance
- Upgraded bearings for high operating speed
- Upgraded high current rate rectifier
- Diode heatsink for optimum output
- 14V Regulator
- Integrated fans
- Strapped rectifier
- Anti-vibration support for stators connection and M8 B+ Terminal
- Upgraded stainless mounting bolt through-hole

Mechanical Specifications:

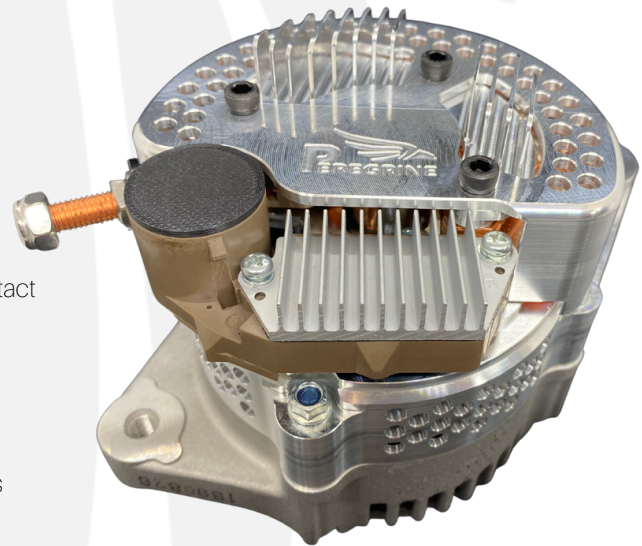
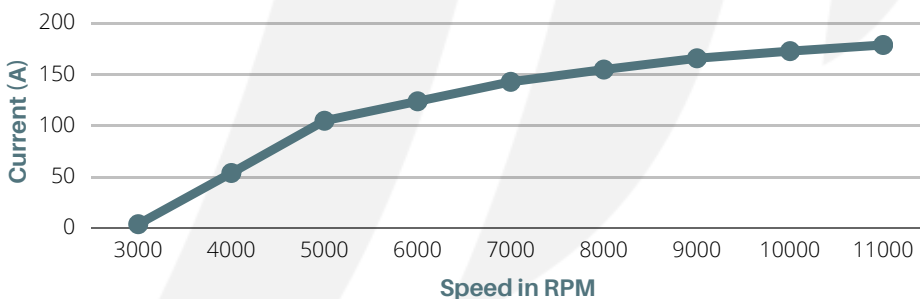
Body Material:	Aluminium Alloy
Rear Cover:	6082 Billet Aluminium
Maximum Speed:	18,000 RPM
Rotation:	Clockwise
Cable Insulation:	Raychem DR25
Battery B+ Connection:	M8
Weight:	3,380g
Service Life:	Application dependent, please contact technical support for more details.

Environmental Specifications:

Temperature:	Continuous ambient -30c to 90c
Ingress Protection:	Splash resistant to motorsport fluids

Electrical Specifications:

Output Voltage:	13.5 VDC
Nominal Output:	170A (10,000 RPM, 25c, 13.5 VDC)
Cut-in Speed:	3,200 RPM



Speed: RPM	Output: (A)
3000	4
4000	54
5000	105
6000	124
7000	143
8000	155
9000	166
10000	173
11000	179